



# MINI-RAD SHIELDING

## EXTRA SHIELDING FOR THE MINI-RAD CAMERA

The Mini-Rad Shielding can be placed outside the Mini-Rad 30 HD and Mini-Rad F30 HD cameras. The shielding doubles the radiation resistance of the camera and enables it to operate in environments where previously only tube cameras could be used.

## APPLICATIONS

- To be mounted on a Mini-Rad camera which must use mirror attachment together with the shielding

## BENEFITS

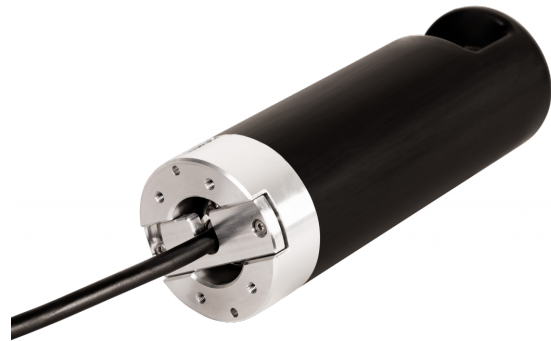
- Doubles the already high radiation tolerance of the Mini-Rad camera

## SPECIFICATIONS

|                                  |  |
|----------------------------------|--|
| Diameter                         | 59,5 mm (2,3")   |
| Length                           | 190 mm (7,4")  |
| Weight                           | 5,1 kg (11,4 lbs)  |
| Housing material                 | Stainless steel, and tungsten overmolded with PUR              |
| Radiation tolerance (dose rate)  | 10 000 Gy/h (1 000 000 rad/h) for Mini-Rad with this shielding |
| Radiation tolerance (total dose) | 100 000 Gy (10 000 000 rad) for Mini-Rad with this shielding   |

*We reserve the right to alter specifications without prior notice*

## MINI-RAD SHIELDING IMAGES



*We reserve the right to alter specifications without prior notice*