

# IMAGE MEASUREMENT

## OBJECT SIZING

The Image Measurement software enables sizing of objects during the course of inspection. The software measures two-dimensional objects by mouse-clicking on a captured image; it is required that the user adds a known reference before measuring.

## APPLICATIONS

- The Image Measurement software is a part of the Inspection Station base package
- The Image Measurement software is also available as separate software

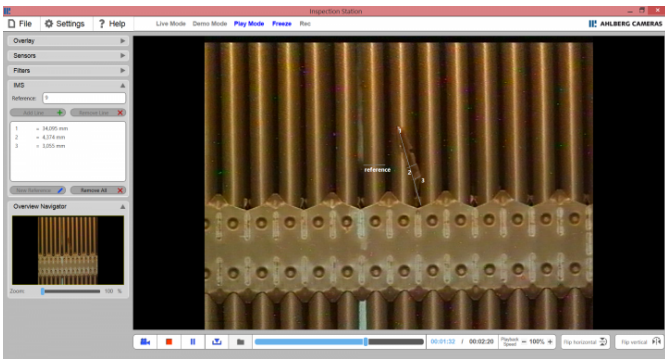
## BENEFITS

- Includes a video overlay application, with which textboxes can be added to the picture
- Measuring accuracy is down to 0.1 mm where the camera--to-object distance, angle of view and the use of magnification decide the accuracy

## SPECIFICATIONS

*We reserve the right to alter specifications without prior notice*

## IMAGE MEASUREMENT IMAGES



*We reserve the right to alter specifications without prior notice*